

MUSK MALLOW FACTSHEET

Musk mallow

Latin name

Malva moschata

The pale pink flowers of musk mallow make a beautiful display on roadsides. They are attractive to pollinators too, helped by the musky smell that gives the plant its name.



LEAVES



What **SHAPE** are the leaves?

Intricate, feathery leaves are deeply cut and **PALMATELY LOBED**, which means they are divided into five or seven different sections, like the palm of your hand with outstretched fingers.

Leaves at the base of the stem, known as **BASAL LEAVES**, are less deeply divided, more rounded and kidney shaped or heart shaped.

How are the leaves **ARRANGED** on the stem?

Leaves **ALTERNATE** on the stem.

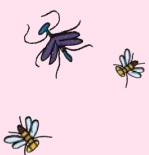
What are the leaf **EDGES** like?

Leaf edges vary from **SERRATED** to **SMOOTH**. The leaves and stems are **HAIRY**.



Scent

Flowers and leaves have a delicate **MUSKY** smell, that increases if the flowers are cut and brought indoors.



GROW WILD



Royal Botanic Gardens
Kew

FLOWERS



Flowers throughout July and August, and into early Autumn in some parts of the UK.

What **COLOUR** are the flowers?

Flowers are usually **PALE PINK** with fine, dark pink veins. **WHITE** flowers can occur.

How are the flowers **ARRANGED** on the **STEM**?

The flowers are produced in **CLUSTERS** at the top of stems and at each **LEAF AXIL**, the axil is above each leaf on the stem and is the point where shoots grow from the main plant stem.


What **SHAPE** are the flowers?

Flowers have **FIVE PETALS** and are shaped like shallow saucers.

Are the **PETALS** all the same shape?

Flowers are **REGULAR**. This means that the petals are all the same shape. Petals are blunt-ended and **NOTCHED**.

Anything else?

Is there anything else that you have noticed about this wildflower? 

Size

How tall is this wildflower?

Grows up to 60cm tall.

What size are the leaves?

Leaves are 2cm to 8cm long and 2cm to 8cm across.

What size are the flowers?

Flowers are 3cm to 5cm in diameter.



Habitat

Where could you find this wildflower growing?

Grows in **SUNNY** positions on **DRY** and neglected land.

On **ROADSIDES**, in **HEDGEROWS** or **MEADOWS** and along the edges of **FARMLAND** fields.

Where does it grow in the UK?

Mainly found in England and Wales but can be seen in parts of Scotland and Northern Ireland.

Find out more: growwilduk.com/whats-that-wildflower

Millimeters